

IN-the-HOOP

Stipple Quilt Squares

20 IN-the-HOOP Appliqué Designs • 5x7 Sewing Field

970484



Spring Tulip Pillow



Supplies

- 18 inch pillow insert
- ½ yard decorator fabric for pillow
- 2 yds. Premade decorative cording with tape attached for insertion.
- ½ yard washable felt
- Small amount of iron on paper backed fusible adhesive (Such as HeatnBond Lite)

Cutting

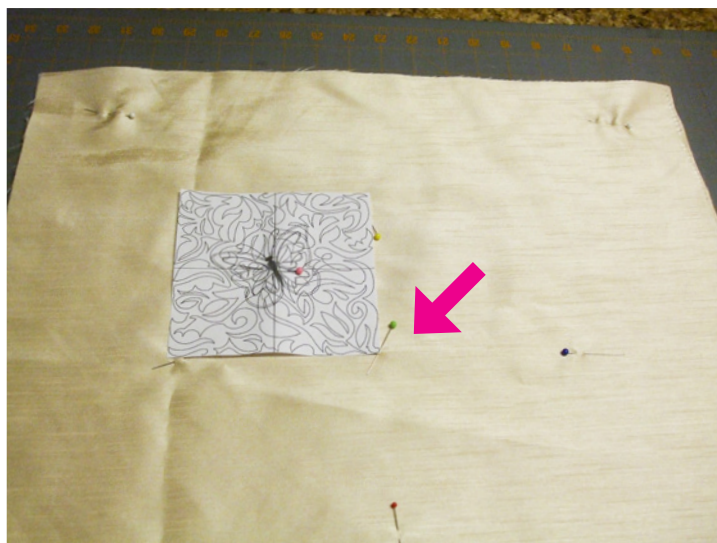
2 - 18 inch squares of pillow fabric (Note: On this sample, one side of the fabric had sheen. The duller side was used for the pillow and the shiny side for the appliqué pieces)

1 - 18 inch square washable felt

8 - 3 inch squares of pillow fabric on which the fusible adhesive has been ironed according to manufacturer's instructions

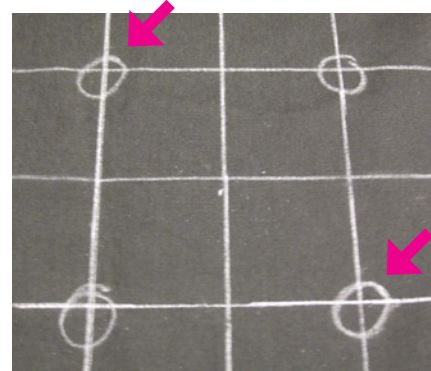
Formats Include: art, dst, exp, hus, jef, ofm, pes, vip, vp3, xxx
Construction

1. Find horizontal and vertical center of the fabric for pillow top. Mark these lines using a removable marker (such as pieces of bath soap or chalk) or with straight pins.

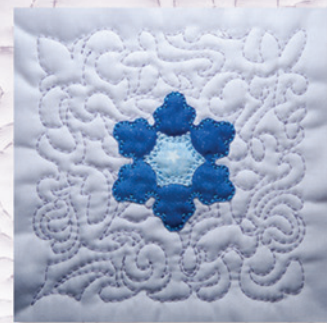


The lines here have been marked with straight pins because of the light colored fabric. Using embroidery software on your computer (Such as AlphaSizer MAX) print a template of the spring tulip design. Trim the template to the edge of the design all the way around. Line up the bottom right side of the template with the center marking of the pillow as shown by the arrow on picture.

2. If you do not have software, measure half of the width and height of the design and mark the fabric as shown on the dark fabric below. The circles show the center of the design for alignment in your embroidery hoop. For this pillow, you will need only the top left and the bottom right area.



Stipple Quilt Squares



20 IN-the-HOOP Appliqué Designs • 5x7 Sewing Field

970484

Formats Include: art, dst, exp, hus, jef, ofm, pes, vip, vp3, xxx

3. Pin or tape the template on the fabric or use the marked lines and hoop the felt backing along with the pillow top fabric lining the marked lines up with the markings on your hoop to center the design. Stabilizer is not needed. Stitch color 1 which will be the stippling. Matching thread was used to create a tone-on-tone effect. Stitch color 2 for a placement line for the first appliqué fabric (leaves). Remove the paper backing and place a piece of the fabric that was prepared for the appliqué on top of the placement lines and stitch color .



4. Remove the hoop from the machine, but do not remove the fabric from the hoop. Using small sharp scissors, trim the appliqué fabric close to the stitching leaving about a $\frac{1}{16}$ inch border.



5. Continue stitching the placement lines, covering with the appliqué fabric, stitching, and trimming around the appliqué piece until the design is completed.
6. Hoop your fabric for the bottom right design and repeat steps 3 thru 5.
7. After the embroidery is finished, with your scissors gently round off the corners of the pillow so that it will be easier to insert the decorative cording. Beginning at the bottom of the pillow, pin the cording to the pillow top with the edge of insertion tape on the cording even with the edge of the pillow. Using a zipper foot, baste the cording to the pillow top as close to the cording as you can.
8. Place the pillow back fabric right sides together with the top. Pin on the side where you can see the previous basting stitch. Using the zipper foot, stitch as close to the cording as possible removing the pins as you approach them with the zipper foot. Leave about a 6 inch opening on the bottom of the pillow.
9. Turn the pillow covering right side out and stuff the pillow form in the pillow through the hole you left at the bottom of the pillow. Hand stitch the opening closed on the bottom of the pillow.

IN-the-HOOP

Stipple Quilt Squares

20 IN-the-HOOP Appliqué Designs • 5x7 Sewing Field
970484



Formats Include: art, dst, exp, hus, jef, ofm, pes, vip, vp3, xxx

Spring Quilt In The Hoop

Supplies

1 $\frac{3}{8}$ yd. Small print fabric
 $\frac{5}{8}$ yd. pastel pink fabric
 $\frac{5}{8}$ yd. pastel purple
1 yd. bright pink fabric for strips and binding
 $\frac{3}{8}$ yd. purple for strips
2 $\frac{5}{8}$ yd. of a busy print for backing
Twin size quilt batting in low or medium loft
Scraps of fabric for appliques
Iron on adhesive for appliqué fabric (We used HeatnBond Lite-
You cannot sew through regular HeatnBond)
Embroidery thread to match block fabric for tone-on-tone effect

Cutting

10 - 10 x 12 inch blocks of small print fabric* (10 inches high and 12 inches wide)

5 - 10 x 12 inch blocks of pastel pink fabric*

5 - 10 x 12 inch blocks of pastel pink fabric*

20 - 10 x 12 inch blocks of batting*

20 - 10 x 12 inch blocks of backing fabric
(*You will need at least a 5 x 7 inch hoop for this project. All machines don't have the same size hoops to fit the design size. When cutting the fabric and batting, you will need it cut so that a trimmed block will be an 8 inch square. Consider this when cutting your fabric for the blocks. The above sizes are a good size for a 5 x 7 hoop.)

9 - 2 x 8 inch strips of bright pink fabric for vertical strips

2 - 2 x 30 inch strips of bright pink fabric for horizontal strips

4 inch wide strips of bright pink fabric for binding edges of quilt (I cut this after quilt is put together for an accurate measurement to include enough length for joining)

6 - 2 x 8 inch strips of purple fabric for vertical strips

2 - 2 x 30 inch strips of purple fabric for horizontal strips

15 - 2 x 8 inch strips of backing fabric

4 - 2 x 30 inch strips of backing fabric

Construction

1. For each block, make a sandwich of the top fabric, batting, and the backing fabric with right sides of the fabric to the outside.
2. Hoop the sandwich centered in your embroidery frame. You will not need stabilizer.



3. Embroider the first color of the stippling pattern. The pastel blocks will have this stippling design only. We used tone on tone for the thread color.



Stipple Quilt Squares

20 IN-the-HOOP Appliqué Designs • 5x7 Sewing Field

970484



- Using one of the designs with a center appliqué, embroider the stippling color 1 and then color 2 which will be a placement guide for the first appliqué piece. Thread color can be changed to the same color as the next color which is the stitch down color.
- Before beginning the appliqué, press the iron on adhesive to the back of the appliqué fabrics as instructed on your adhesive package. This will keep the fabric from fraying.
- Peel the paper backing from the adhesive and place the fabric on the stitched outline being sure to cover the entire outline.
- Stitch the next color.



- Trim around the stitched fabric leaving about $\frac{1}{16}$ of an inch border.



- Continue stitching the placement lines, placing the appliqué fabric on top, stitching and trimming until the design is completed.
- After all the blocks are finished, trim each block to an 8 inch square, cutting through all three layers.
- Lay the blocks out according to this pattern or one you prefer.



- Make a sandwich of the right edge of the top left block using one of the 2x8 strips cut of the solid fabric and one of the 2x8 strips that matched the backing fabric. Both strips will have right sides together with the block.

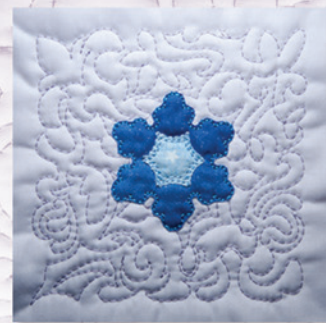


IN-the-HOOP

Stipple Quilt Squares

20 IN-the-HOOP Appliqué Designs • 5x7 Sewing Field

970484



Formats Include: art, dst, exp, hus, jef, ofm, pes, vip, vp3, xxx

13. Pin and stitch with a ½ inch seam. All seams are ½ inch seams.



14. Press the block, pressing the top side strip away from the block.



15. Sew the next block (one that is right of the one you just used) to the top strip that you just sewed on the first block. (Top strip means the strip that will be on the top side of the finished quilt. Backing strip will be the one on the bottom of the finished quilt.) Do not sew the backing strip in this seam.



16. Place the two blocks with the top side of the quilt on the bottom. The two edges should meet in the middle. Press the two seam edges down. Fold the edge of the other strip that was not sewn in the seam down ½ inch and then lap it over the raw edges to the seam line made when the two blocks were seamed together and press.

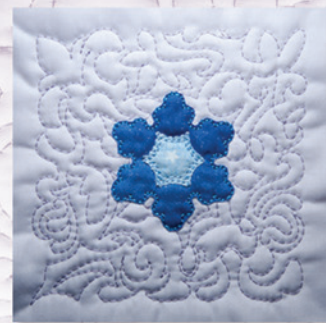


IN-the-HOOP

Stipple Quilt Squares

20 IN-the-HOOP Appliqué Designs • 5x7 Sewing Field

970484



17. Pin the folded strip down from the top of the quilt so that you can top stitch that edge from the top of the quilt. Then top stitch the other side of the strip on the top so that both sides will appear the same.



20. To bind the outside edges of the quilt, sew the 4 inch strips together end to end. Press in half with the wrong sides together. Use your favorite method to attach the binding to the quilt. You may miter the corners or trim the corners with a gentle curve and not have to make the miter in the corners. I like to sew the binding to the back of the quilt then bring it to the front and top stitch. Others like to stitch it to the front and then hand stitch it to the back.



18. The reverse side of that strip will have the same stitching on both sides as on the top of the quilt.
19. Continue sewing the vertical seams on the rows. After completing the vertical seams, sew all the horizontal seams using the same method as the vertical seams. Instead of sewing the short 8 inch seams, you will be sewing the long seam all the way across the quilt to join the rows together.

IN-the-HOOP

Stipple Quilt Squares

20 IN-the-HOOP Appliqué Designs • 5x7 Sewing Field

970484



Formats Include: art, dst, exp, hus, jef, ofm, pes, vip, vp3, xxx

Spring Placemat



Supplies

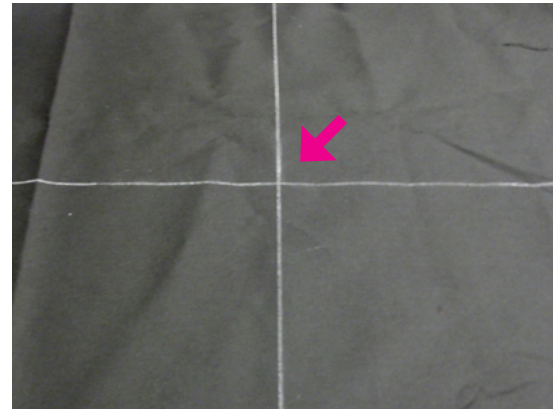
- ½ yd. Washable felt for batting
- ½ yd. black fabric
- ¼ yd. medium print fabric
- 6" striped fabric
- ½ yd. colorful bold print fabric for napkin and backing for placemat
- Scraps of bright fabrics for appliques
- Small amount of paper backed iron on adhesive to iron onto appliqué fabric. (Such as HeatnBond Lite - You cannot sew through regular HeatnBond)

Cutting

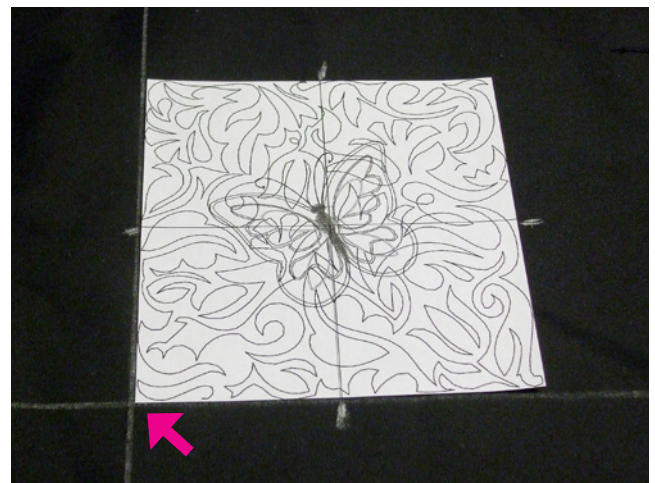
- 1 - 21 x 18 inch piece of washable felt
- 1 - 18 x 18 inch piece of black fabric
- 4 - 3 x 16 inch strips of medium print fabric
- 1 - 6 x 28 inch piece of striped fabric for pocket
- 1 - 19 x 14 inch piece of bold print for backing
- 1 - 18 x 18 inch piece of bold print for napkin

Construction

1. Find the horizontal and vertical center of the black fabric and mark lines.



2. Place the black fabric on top of the washable felt with the raw edges even.
3. Print a template of your design using your embroidery software. (Such as Dakota's AlphaSizer Max) Trim the template to the edges of the design. Place the template so that the corner is in the corner of the marking you made on the black fabric. Pin or tape the template to the fabric and hoop it using the center markings of the template to line up in the center of your hoop. No stabilizer is needed if you are using the felt as batting. If you are using regular quilt batting, use a piece of light weight cut away stabilizer. If you do not have any software, see # 4.



IN-the-HOOP

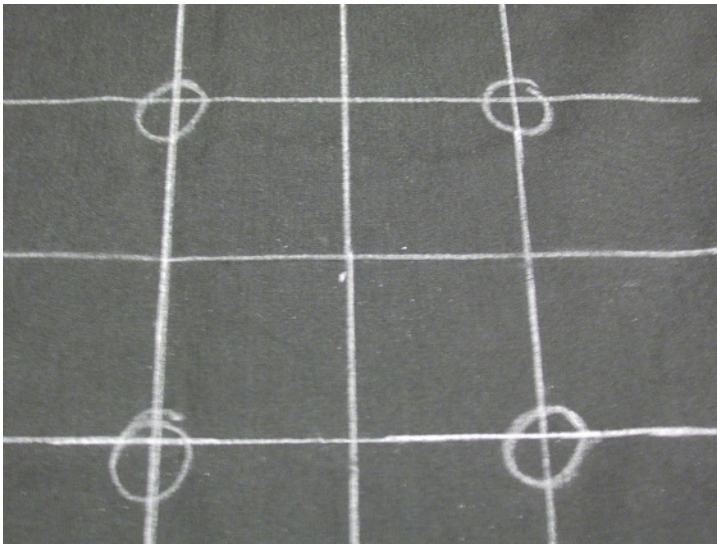
Stipple Quilt Squares

20 IN-the-HOOP Appliqué Designs • 5x7 Sewing Field
970484



Formats Include: art, dst, exp, hus, jef, ofm, pes, vip, vp3, xxx

- Without software, you can measure half the size of the design from the vertical and horizontal lines and make another center mark to use to line up on your hoop. The circles show the center of the four designs.



- Stitch the next color for an outline and place the next fabric over the outline, stitch and trim. Continue this method until the design is finished.

- Stitch color 1 with black thread for a tone on tone effect. This will be the stippling stitch.
- Stitch color 2 using the same color as the first piece of appliqué fabric. This will give you the placement for the first piece of fabric.
- Iron the adhesive paper to the back of the appliqué fabrics as directed by the manufacturer. This will keep the raw edges from fraying. Remove paper.
- Place the fabric over the outline with the right side up and stitch the next color.
- Remove the hoop from your machine, but do not remove the design from the hoop. Trim the fabric close to the stitching.



- Place the template on the next embroidery area with the adjoining side almost touching and hoop using the marking on the template as before. Without a template, just hoop using the markings on your fabric.

Stipple Quilt Squares

20 IN-the-HOOP Appliqué Designs • 5x7 Sewing Field
970484



Formats Include: art, dst, exp, hus, jef, ofm, pes, vip, vp3, xxx

12. Continue until you have all four designs completed. I used the same appliqué fabrics just changing the colors of the butterfly parts to make them look a little different but the same colors.



13. Lay the 3x6 inch strips around the edge of the stippling to form a border. Press the edges that are next to the stippling 1/2 inch to the wrong side.

14. Fold the end of one strip down in a 45 degree angle and press so you can see the 45 degree line when unfolded.



15. Place this end of the strip right sides together with the end of another strip making sure the 1/2 inch folded edges are on the same side.

16. Stitch along the 45 degree fold mark. When unfolded, this will make two sides of the border with a mitered corner. Trim the seam and press open.



17. To find the correct length of the strips, fold down on a 45 degree angle the end of one of the strips that you have sewed together so the inside corner is at the corner of the stippling on the design. Sew the next strip to it using the same method as in step 15.

18. When the border is completed, top stitch the inside edge and press.



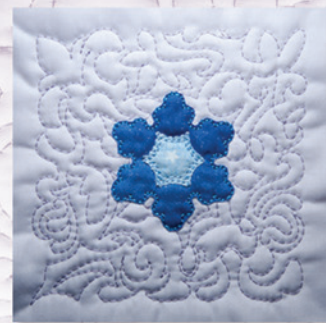
19. Trim the top, right and bottom sides so that the border is 2 inches wide. You will trim these three sides through the border fabric, black fabric and batting. On the left side, trim the border fabric only.

IN-the-HOOP

Stipple Quilt Squares

20 IN-the-HOOP Appliqué Designs • 5x7 Sewing Field

970484

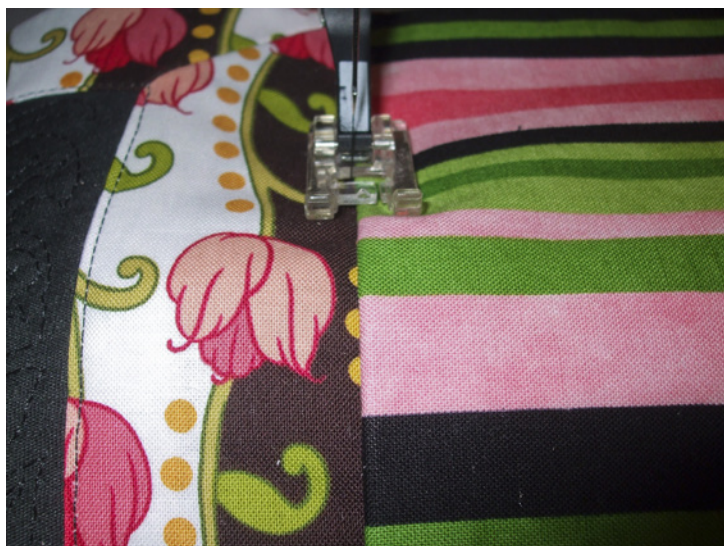


20. Fold the 6x28 inch striped fabric in half wrong sides together so that the short ends match. Then fold the top piece back down even with the bottom fold. This forms a pocket. Press.



21. Place the pocket fabric on the left border edge with right sides together. Stitch a ½ inch seam through all fabrics and batting. Fold the pocket fabric back and press.

22. Stitch in the ditch between the pocket fabric and the border fabric.



23. Place the 19 x 14 backing fabric right sides together with the placemat and stitch a ½ inch seam around, leaving about a 6 inch opening in the bottom. Clip the corners and turn right side out through the opening you left. Press and slip stitch the opening together.

24. To make the napkin, hem with a narrow hem or serge the edges to finish. Fold the napkin and insert in the pocket. The silverware could be added to the pocket along with the napkin if desired.

