

Note: Some designs in this collection may have been created using unique special stitches and/or techniques. To preserve design integrity when rescaling or rotating designs in your software, always rescale or rotate designs using the handles directly on-screen.



CM564_48 Triceratops Portrait Appliqué
4.55 X 4.55 in.
115.57 X 115.57 mm
25,703 St.



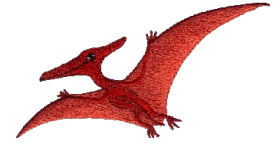
CM565_48 T-Rex Portrait Appliqué
4.53 X 4.51 in.
115.06 X 114.55 mm
25,052 St.



CM566_48 Apatosaurus Portrait Appliqué
4.53 X 4.51 in.
115.06 X 114.55 mm
20,375 St.



CM567_48 Parasaurorolophus
2.99 X 4.55 in.
75.95 X 115.57 mm
15,450 St.



CM568_48 Pterodactyl
4.74 X 2.53 in.
120.40 X 64.26 mm
8,242 St.



CM569_48 Velociraptor
4.58 X 3.18 in.
116.33 X 80.77 mm
14,997 St.



CM570_48 Tyrannosaurus Rex
5.25 X 4.26 in.
133.35 X 108.20 mm
19,846 St.



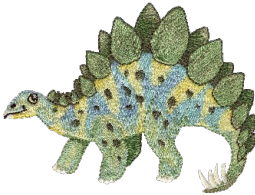
CM571_48 Corythosaurus
5.14 X 3.31 in.
130.56 X 84.07 mm
17,397 St.



CM572_48 Apatosaurus
5.35 X 3.97 in.
135.89 X 100.84 mm
26,173 St.



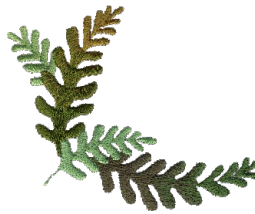
CM573_48 Triceratops
4.90 X 3.62 in.
124.46 X 91.95 mm
21,781 St.



CM574_48 Stegosaurus
4.65 X 3.57 in.
118.11 X 90.68 mm
22,976 St.



CM575_48 Fern Border
1.31 X 6.65 in.
33.27 X 168.91 mm
7,545 St.



CM576_48 Fern Corner
3.51 X 2.70 in.
89.15 X 68.58 mm
7,962 St.



CM577_48 Prehistoric Plant 1
2.16 X 2.60 in.
54.86 X 66.04 mm
4,960 St.



CM578_48 Prehistoric Plant 2
2.49 X 2.77 in.
63.25 X 70.36 mm
7,855 St.



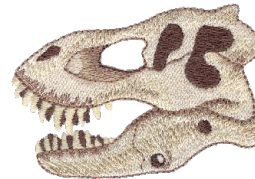
CM579_48 Prehistoric Plant 3
3.54 X 3.46 in.
89.92 X 87.88 mm
8,950 St.



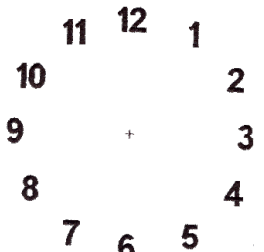
CM580_48 Dino Footprints
1.15 X 5.54 in.
29.21 X 140.72 mm
4,315 St.



CM581_48 Volcano
3.53 X 4.89 in.
89.66 X 124.21 mm
12,385 St.



CM582_48 T-Rex Skull
3.06 X 2.23 in.
77.72 X 56.64 mm
11,007 St.



CM583_48 Jumbo Clock Face
6.47 X 6.71 in.
164.34 X 170.43 mm
4,147 St.

Design contains a loose fill.
 Some white areas shown are not stitched.

Design is larger than 5" (127 mm) in either direction.
 Design is smaller than 1.5" (38.1 mm) in either direction.

Listings below indicate color sample, stitching order and suggested thread color number in Isacord, YLI Fine Metallic, Yenmet or YLI Variegated threads.

CM564_48 Triceratops Portrait Appliqué

1. Placement Stitch.....	1154
2. Cut Line & Tackdown.....	1154
3. Skin.....	5934
4. Skin Highlights.....	0442
5. Skin Shading.....	5335
6. Skin Shading.....	5833
7. Design Outlines.....	5555
8. Crown.....	0552
9. Horns & Eye.....	0970
10. Horns Shading.....	0552
11. Face.....	0020
12. Horn Outlines.....	0873
13. Cover Stitch.....	1154

CM565_48 T-Rex Portrait Appliqué

1. Placement Stitch.....	5633
2. Cut Line & Tackdown.....	5633
3. Mouth.....	2241
4. Tongue.....	2051
5. Mouth & Tongue Light Shading.....	2160
6. Eye.....	0630
7. Teeth & Eye Highlight.....	0015
8. Light Skin Shading.....	0870
9. Yellow Skin Shading.....	0660
10. Gold Skin Shading.....	0532
11. Tan Skin Shading.....	0874
12. Brown Skin Shading.....	0722
13. Dark Brown Skin Shading.....	1055
14. Nose & Eye.....	0020
15. Mouth & Tongue Dark Shading.....	2222
16. Cover Stitch.....	5633

CM566_48 Apatosaurus Portrait Appliqué

1. Placement Stitch.....	0821
2. Cut Line & Tackdown.....	0821
3. Eye.....	0630
4. Dark Gold Shading.....	0731
5. Light Gold Shading.....	0660
6. Light Brown Shading.....	0853
7. Brown Shading.....	1055
8. Medium Brown Shading.....	0945
9. Dark Brown Shading & Outlines.....	1375
10. Face Shading.....	0532
11. Leaves & Stems.....	5633
12. Mouth, Nose & Eye.....	0020
13. Eye Highlight.....	0015
14. Cover Stitch.....	0821

CM567_48 Parasaurolophus

1. Eye.....	0630
2. Light Blue Shading.....	3963
3. White Shading & Nails.....	0101
4. Blue Shading.....	3951
5. Medium Blue Shading.....	3842
6. Dark Blue Shading.....	3654
7. Eye, Mouth & Nose.....	0020

CM568_48 Pterodactyl

1. Wings.....	1600
2. Wing Shading.....	1725
3. Body.....	1902
4. Body Shading.....	2022
5. Eye.....	0015
6. Mouth & Eye.....	0020

CM569_48 Velociraptor

1. Eye & Body Underlay.....	0015
2. Light Yellow Body.....	6151
3. Green Shading.....	6051
4. Light Orange Shading.....	0811
5. Dark Orange Shading.....	1010
6. Medium Red Shading.....	1543
7. Dark Red Shading.....	2224
8. Light Red Shading.....	1725
9. Eye, Mouth & Nose.....	0020
10. Nails.....	0761

CM570_48 Tyrannosaurus Rex

1. Dark Mouth Shading.....	1061
2. Tongue & Mouth.....	1755
3. Teeth & Eye Highlight.....	0101
4. Eye.....	0640
5. Light Skin Shading.....	0870
6. Yellow Skin Shading.....	0660
7. Gold Skin Shading.....	0532
8. Tan Skin Shading.....	0874
9. Brown Skin Shading.....	0722
10. Dark Brown Skin Shading.....	1055
11. Nose & Eye.....	0020
12. Nails.....	0101

CM571_48 Corythosaurus

1. White Shading & Eye.....	0015
2. Light Purple.....	3040
3. Purple Shading.....	2764
4. Medium Purple Shading.....	3241
5. Dark Purple Shading.....	2832
6. Eye, Mouth & Nose.....	0020
7. Nails.....	0970

CM572_48 Apatosaurus

1. Eye.....	0630
2. Dark Gold Shading.....	0731
3. Light Gold Shading.....	0660
4. Light Brown Shading.....	0853
5. Brown Shading.....	1055
6. Medium Brown Shading.....	0945
7. Dark Brown Shading & Outlines.....	1375
8. Mouth, Nose & Eye.....	0020
9. Cheek.....	0731
10. Nails & Eye Highlights.....	0970

CM573_48 Triceratops

1. Skin.....	5934
2. Skin Highlights.....	0442
3. Skin Shading.....	5643
4. Skin Shading.....	5833
5. Skin Shading & Outlines.....	5335
6. Horns & Eye.....	0970
7. Horns Shading, Eye & Crown.....	0771
8. Horn Outlines.....	0873
9. Face.....	0020
10. Toes.....	0552
11. Design Outlines.....	5324

CM574_48 Stegosaurus

1. Light Green Body Shading & Body Underlay.....	6051
2. Light Blue Shading.....	4952
3. Medium Blue Shading.....	4152
4. Yellow Shading.....	0520
5. Dark Yellow Shading.....	0221
6. Spine & Body Shading.....	5822
7. Spine Medium Green Shading.....	0453
8. Spine Medium Shading.....	5633
9. Spine Dark Shading & Spots.....	5643
10. Nails, Nose, Tail & Eye.....	0970
11. Eye, Mouth & Nose.....	0020
12. Spine Light Green Shading.....	6051

CM575_48 Fern Border

1. Top Leaf.....	5230
2. Second Leaf.....	5933
3. Third Leaf.....	5610
4. Fourth Leaf.....	4152
5. Bottom Leaf.....	4610

CM576_48 Fern Corner

1. Right Leaf.....	5633
2. Right Leaf Shading.....	5643
3. Left Leaf.....	5610
4. Middle Large Leaf.....	6133
5. Middle Large Leaf Shading.....	5934
6. Middle Small Leaf.....	5531

CM577_48 Prehistoric Plant 1

1. Light Leaves.....	5610
2. Dark Leaves.....	5633
3. Root.....	0941
4. Root Shading.....	0853
5. Root Linework.....	1055

CM578_48 Prehistoric Plant 2

1. Leaves.....	4610
2. Dirt.....	0941
3. Medium Dirt.....	0853
4. Dark Dirt & Stems.....	1055

CM579_48 Prehistoric Plant 3

1. Leaves.....	5643
2. Trunk.....	0651
3. Gold Trunk Shading.....	0552
4. Tan Trunk Shading.....	1252
5. Trunk Outlines.....	1055

CM580_48 Dino Footprints

1. Light Footprints.....	0853
2. Dark Footprint Shading.....	1055

CM581_48 Volcano

1. Volcano Light Tan Shading.....	0552
2. Volcano Tan Shading.....	1252
3. Volcano Medium Tan Shading.....	0853
4. Volcano Dark Tan Shading.....	1055
5. Orange Explosion.....	8002
6. Red Explosion.....	9924
7. Yellow Explosion.....	9925
8. Orange Lava.....	1010
9. Light Red Lava.....	1521
10. Dark Red Lava.....	1725
11. Yellow Lava.....	0630

CM582_48 T-Rex Skull

1. Skull.....	0870
2. Dark Teeth Shading.....	1874
3. Yellow Shading & Teeth.....	0660
4. Light Tan Shading.....	0861
5. Medium Tan Shading & Outlines.....	0722
6. Holes & Shading.....	1874

CM583_48 Jumbo Clock Face

1. Number.....	0020
2. Center Point.....	4174

Supplies:

- Pre-purchased clock
- OESD AquaMesh Water Soluble Stabilizer
- Fabric for design background
- Fabric for design appliqué
- Fabric glue
- Poster board
- Eyelash trim or ribbon for embellishment (optional)
- OESD Signature Collection #12327 Cuteasaurus; available at: www.embroideryonline.com.
- Embroidery machine with jumbo hoop. Clock face requires minimum sewing field of 7" x 7"

Embroidery:

- Stitch circular design of your choice (#CM564_48, CM565_48 or CM566_48) on fabric that is larger than your pre-purchased clock face.
- Without unhooping first stitched design, stitch the clock face (CM583_48) directly on top of the first stitchout.

Clock:

- Disassemble clock (**Photo 1**).
- Cut poster board to fit inside the clock face.
- Bore hole in center for hands (**Photo 2**).
- Bore a hole in the design in the center that was marked by a few stitches while stitching the clock face.
- Thinly spread fabric glue on poster board. Use a spreader to ensure thin layer so that glue does not soak through your fabric.
- Position embroidery over your cut poster board, lining up holes.
- Allow to dry.
- Cut excess edges of fabric (**Photo 3**).
- Glue new clock face into pre-purchased clock. Take care to line the number twelve up with the original clock face as your clock may have a pre-drilled hole for hanging.
- Embellish edge of clock with eyelash trim or ribbon if desired.
- Re-assemble clock. (You may choose to not replace the glass if it interferes with embellishment trim).
- Hang.

