



the first ironing system for  
**more practical ironing**



**PREMIUM S3**



**LAURASTAR**<sup>®</sup>  
You deserve the best.

# PREMIUM S3

the first ironing system for  
more practical ironing



#### DOUBLE VOLUME

Double volume of extra fine steam, for a lasting result leaving no damp traces.



#### CONSTANT PRESSURE

A constant pressure of 50 psi produces 211 quart of steam volume per minute – the result is professional ironing quality.



#### EASY FOLDING – PATENTED

Foldable board with six height-adjustment settings for all ironing requirements.



#### PERMANENT IRONING

Removable 1.3 quart reservoir – uninterrupted ironing without waiting.



#### SAFETY BOX

Iron safety storage box, to keep the still warm iron well protected.



#### AQUA FILTER

**NEW** – Scale filter – ordinary water can be used and the iron's service life is extended.



#### FAST HEATING TIME

Super fast heating time in five minutes for immediate use.



#### COMPACT STORAGE

Easy-to-move system thanks to its two pairs of integrated wheels and its reduced size of 7.87 in when stored.

# life is more beautiful with the PREMIUM S3



No more waiting to fill up thanks to its removable water tank and fast-heating system.



Freshen up your clothes in seconds.

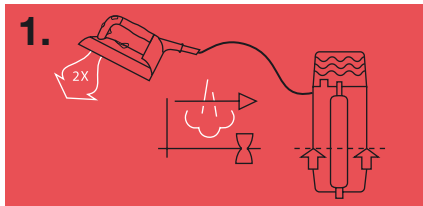


So user-friendly that anyone can use it, even your spouse.



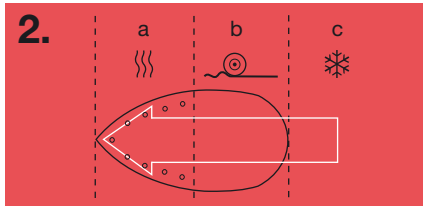
It guarantees you a perfect look.

# the unrivaled **advantages** of LAURASTAR



## **LAURASTAR professional steam – patented**

The steam is diffused at a constant pressure which produces 211 quart of steam per minute, as recommended by ironing professionals. Heated once in the boiler, the steam is cooled and then reheated inside the iron: this is the unique LAURASTAR double-volume steam.



## **LAURASTAR professional soleplate – patented**

The LAURASTAR professional soleplate is designed for the following three steps in ironing: (a) heating, (b) smoothing and (c) cooling the fabric. The fibres are thus fixed in a single movement for a lasting result.

# PREMIUM S3

<b>Steam pressure</b>	50 psi (double volume)
<b>Steam droplets</b>	extra fine
<b>Ironing time</b>	unlimited
<b>Heating time</b>	approx. 5 minutes
<b>Water tank capacity</b>	removable, 1.3 quart
<b>Electric cable</b>	approx. 118.1 in
<b>Mobility</b>	2 pairs of integrated wheels
<b>Ironing board height</b>	6 positions, 32–40 in

<b>Dimensions (L x W x H)</b>	54 x 16.5 x 8 in
<b>Power appliance</b>	1700 W
<b>Total weight</b>	approx. 37.5 lbs
<b>Accessories included</b>	MYCOVER quality cover AQUA S-LINE integrated filter + 1 AQUA REFILL refill SOFTPRESSING soleplate COOLMAT insulating mat RINS-ME drain tray HOLDER S-LINE cable holder

Your agent:



[www.laurastarUS.com](http://www.laurastarUS.com)

  
**LURASTAR**<sup>®</sup>  
You deserve the best.